



Fitting Instructions

TOWBAR **SB29Q**
For Saab 9-3 Sports Saloon
2002-

MATERIALS

A	1	Cross Bar
C	4	M10 x 40 x 1.5mm Bolts, Nuts, Lock Washers and Flat washers
D	2	Spacer
E	1	Cross Brace
F	2	M10 x 30 x 1.5mm Bolts, Lock Washers
G	2	M12 x 100 x 1.75 Bolts and Nyloc Nuts (Grade 10.9 torque setting 139 Nm)
H	1	Electrical Plate (ZEP1)
J	1	Electrical Plate Bracket (ZEQ1)
K	1	M10 x 25 x 1.5 Bolt, Nut, Lock Washer and 2 Flat Washers (20mm O.D)
L	2	Flat Washers (M12 x 25 O.D) Note: Hand to customer with fitting instructions.
ZF	1	Flanged neck to 94/20/EC A50-1 (ZF3002-A)
CB	3	M16 x 50mm Coupling Bolts, Nuts, Lock Washers

FITTING

1. Remove bumper by:
 - Removing two plastic nuts from lower bumper section near spare tyre well.
 - Remove self-tapping screws from wheel arch edge. (2 on each wheel arch)
 - Remove self-tapping screw from bottom edge of bumper near to each wheel arch.
 - Remove rear light clusters. (3 flanged nuts inside boot)
 - Remove the two screws holding the bumper in the light cluster areas.
 - Remove reversing sensors if fitted
 - Unclip ends of bumper from bodywork and pull rearwards to remove from car.
2. Cut lower edge of bumper. **Note:** If the electrical plate is positioned using Bolts (G), a wider cut will need to be made in the bumper, as shown. Alternatively it can be positioned to the right or left of the towball using Bolts (CB).
3. Loosely assemble Spacers (D) and Cross Bar (A) to the aluminium bumper beam using bolts (C)
4. Loosely assemble Cross Brace (E) to mounting points on spare wheel well using bolts (F)
5. Connect Cross Bar (A) to Cross Brace (E) using bolt (CB)
6. **Fully tighten all bolts** to torque specified below.
7. Assemble Flanged neck (ZF) and Electrical Plate Bracket (J) to Cross Bar (A) using bolts (G). Fully tighten. (Torque setting **139 Nm**)
Note: When fitting detachable kit (ZQ3002) use extra washers (L) in separate bag to space out bolts on opposite side to electrical plate bracket (ZEQ1).
8. Assemble Electrical Plate (H) using Bolts (K). Fully tighten.
9. Re-assemble bumper and light clusters in reverse order to above.

Note: This towbar must be used with either a Witter Towball (part number Z1 or ZS3002-A) or Class A50-1 or A50-X towball dimensionally

Conforming to A50-1 with a 'D' and 'S' value greater than or equal to that of the towbar.

Please refer to the vehicle specification for the trailer weight and nose limits, which **must be observed**.

Recommended torque settings Grade 8.8: M8 - 27Nm, M10 - 53 Nm, M12 - 95 Nm, M14 - 150 Nm, M16 - 214 Nm

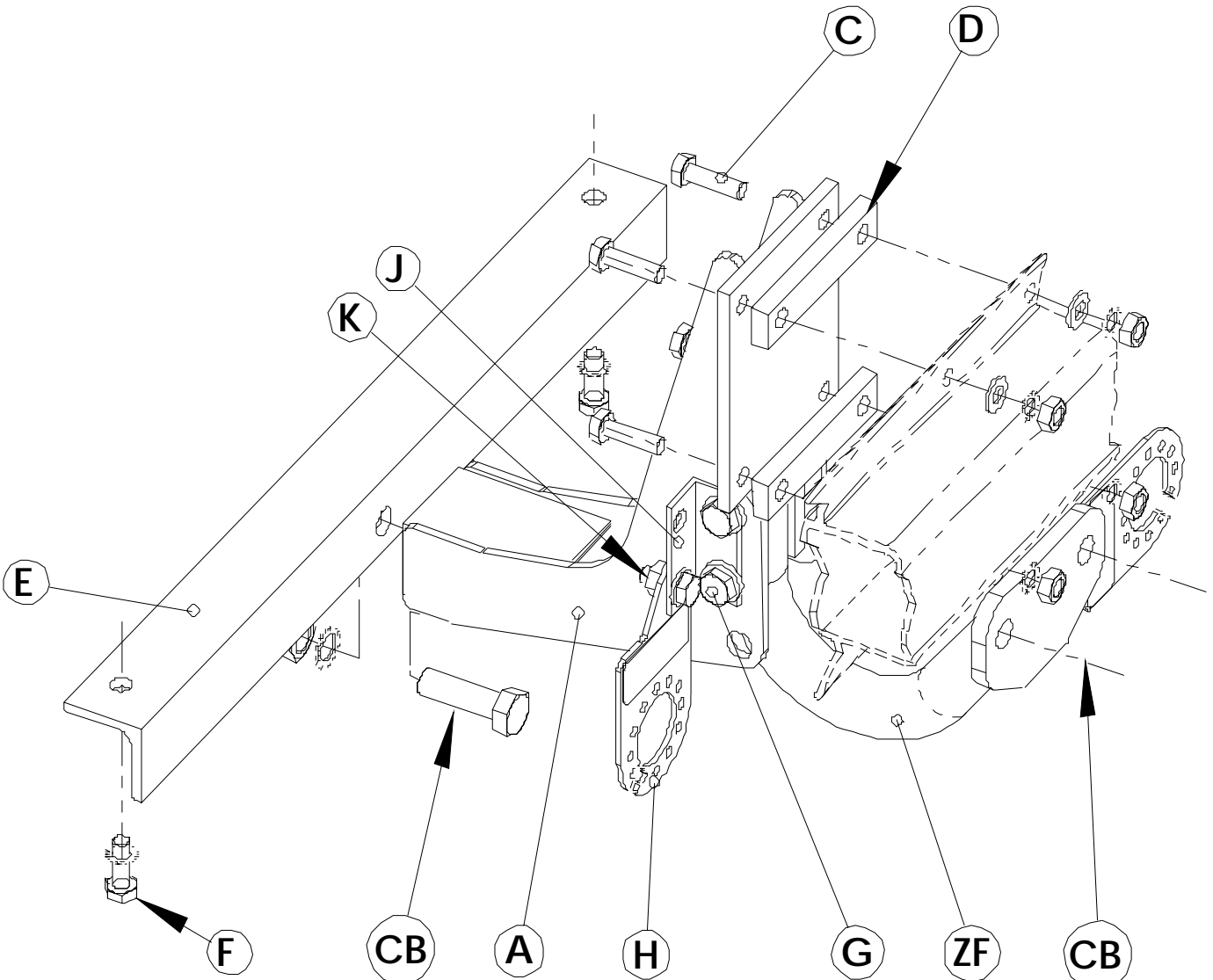
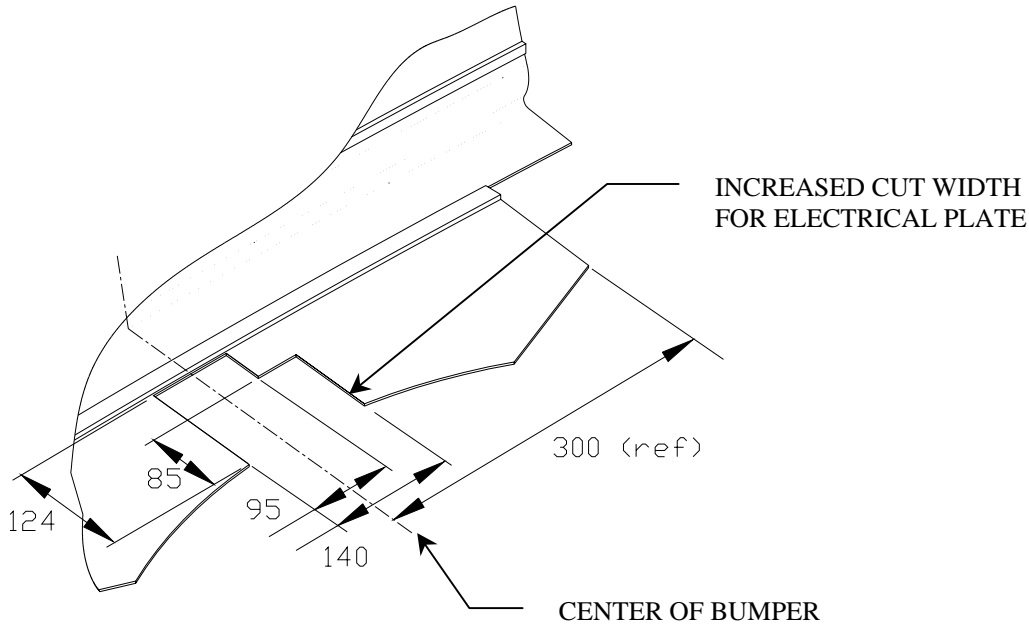
Grade 10.9: M12 - 139Nm

SEE SHEET 2 FOR FITTING DIAGRAM



Fitting Instructions

TOWBAR SB29Q
For Saab 9-3 Sports Saloon
2002-





Fitting Instructions

QUANTUM DETACHABLE
TOWBALL SYSTEM
(ZQ XXXX)

MATERIALS

A	1	Receptor/Socket for Towball
T	1	Detachable Towball
K	2	Keys for Detachable Towball
X	4	M12 x 25 x 1.75mm Bolts, Spring Washers and Flat Spacer Washers (25mm O.D)
FC	1	Fixed Weather Cover
RC	1	Removable Weather Cover
L	1	Centreline Label
B	1	Bag
ZQM1	1	Operation Manual

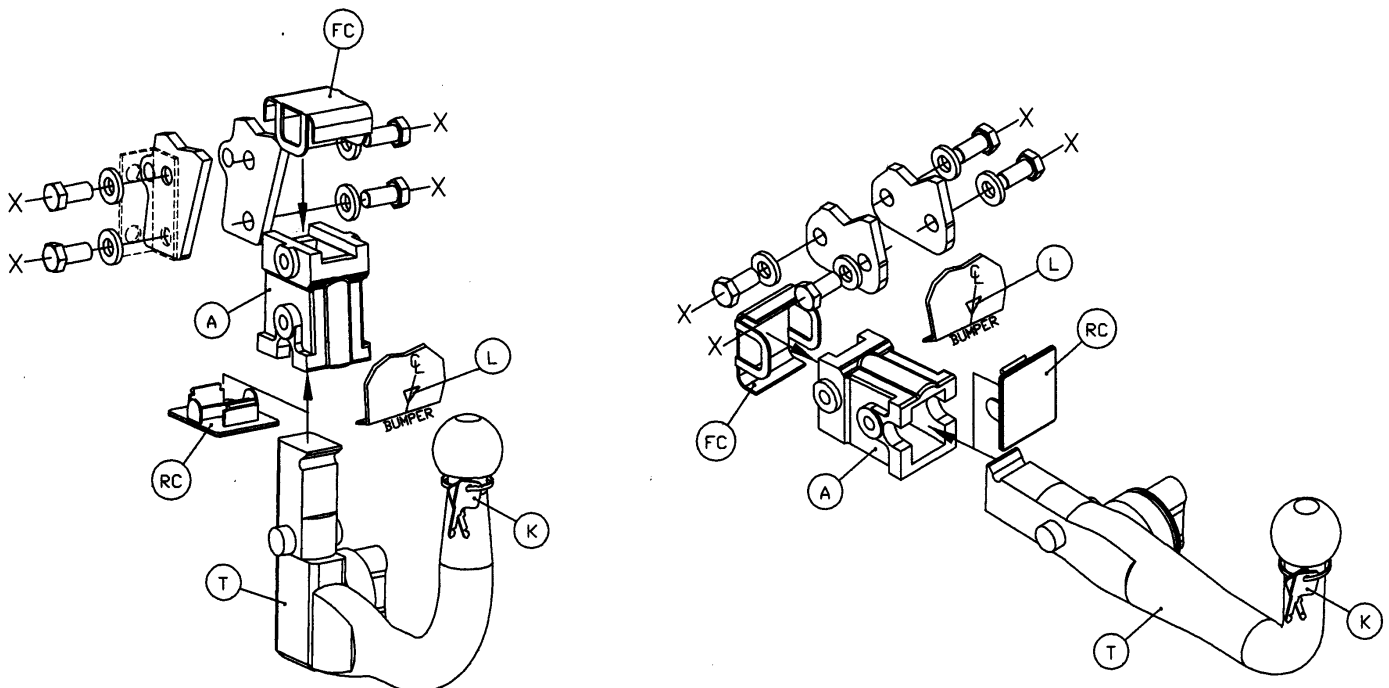
INSTALLATION PROCEDURE

1. Place black plastic fixed weather cap (FC) over forward/ (horizontal system) / upper (vertical system) holes of receptor/socket (A), insert receptor/socket (A) into gap between mounting plates on the towbar, and loosely attach using bolts (X).
 - Notes: (ZEQ1), which is provided as part of the towbar should be refitted on left hand side, together with the electrical socket mounting plate (ZEP1). Only use the 25mm O.D Flat Spacer Washers (X) where there are no loose components attached, i.e. ZEQ1 (electrical socket mounting plate bracket, shown in dashed linetype below).
2. Insert detachable towball unit (T), using procedure detailed in Operation Manual provided, and ensure correct vertical alignment of the towball before fully tightening bolts (X).
3. Attach centreline label (L) to lower edge of bumper.
4. Remove keys (K) from neck of towball, and record the key number in the Operation Manual, together with the fitters name, telephone number, date fitted, vehicle model and registration number and towbar part number.

Bumper Cut – It may be necessary to trim the bumper to allow adequate clearance around the operation handle on the right hand side.

Note: It is essential that the customer/end user is familiar with the operation of the towball system, as detailed in the operation manual, which must be handed to the customer/end user.

Recommended torque settings: M12 - 95 Nm



Important – It is essential to ensure that the Operation Manual is in the possession of the end user.