



Fitting Instructions

TOWBAR RN71Q
For RENAULT ESPACE
May 2003-

MATERIALS

A	1	Cross Tube	C	2	Sidearms	D	2	10mm Spacers
E	2	3mm Spacers	F	2	Bushes 40mm O.D, 29mm long			
G	2	M12x140x1.75mm Bolts, Nuts, Lock Washers and Flat Washers (50mm O.D)						
H	1	M6 Nut, Lock Washer, Flat Washer and Bush 13mm O.D, 15mm long						
J	2	M14x50x2mm Bolts, Nuts, Lock Washers and Flat Washers (27mm O.D)						
K	4	M14x35x2mm Bolts, Nuts, Lock Washers and Flat Washers (27mm O.D)						
U	1	M10x25x1.5mm Bolt, Nut, Lock Washer and 2 Flat Washers (25mm O.D.)						
ZEP1	1	Electrical Plate	ZEQ2	1	Electrical Plate Angle			
ZF	1	Flanged Neck to EC 94/20-A50-1(ZF2030-B)						
V	2	M12x100x1.75mm Bolts and Nyloc Nuts (Grade 10.9-Torque setting 139Nm)						
CB	2	M16x50x2mm Coupling Bolts, Nuts and Lock Washers						

FITTING

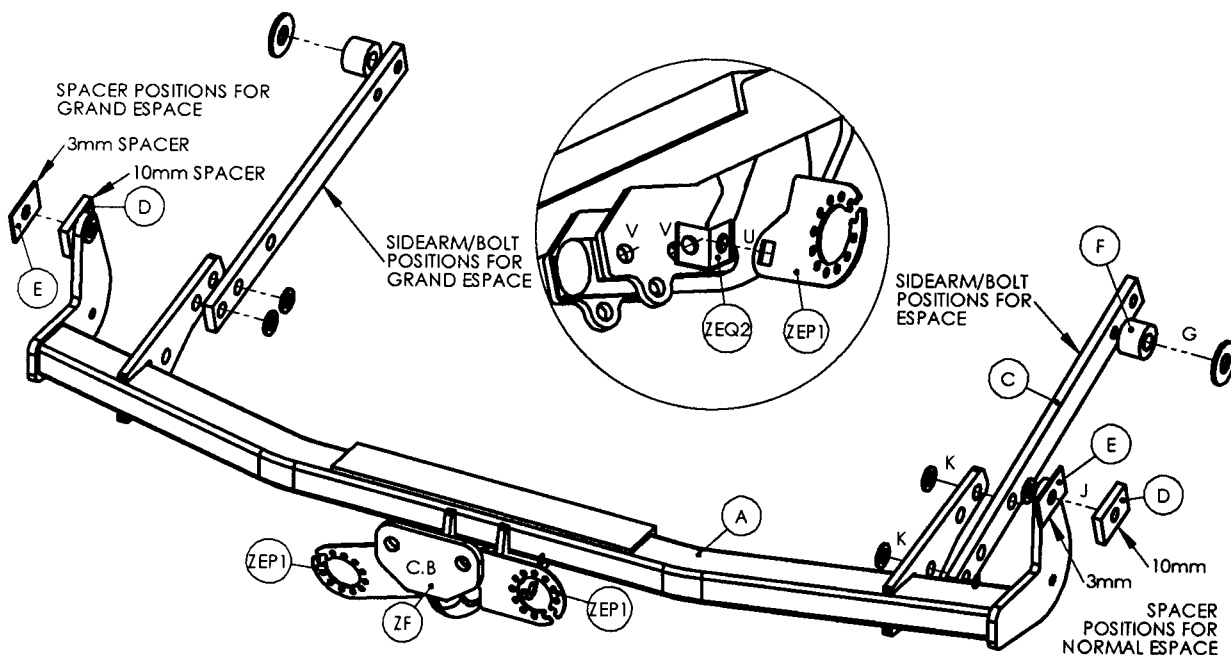
- Lower spare wheel (in boot, lift dust cover, unscrew bolt). Remove small side splash panel each side, rearward of rear wheels (two self tapping screws). On normal Espace only, lower exhaust (release nut on rearmost hanger).
- For normal Espace: Attach Cross Tube (A) using Bolts (J) with one Spacer (E) between Cross Tube (A) and vehicle each side, and remaining Spacer (D) on other side of valance (see diagram for correct use of spacers).
- For Grand Espace: Attach Cross Tube (A) using Bolts (J) with one Spacer (D) between Cross Tube (A) and vehicle each side, and remaining Spacer (E) on other side of valance (see diagram for correct use of spacers).
- Remove rear wheels, attach Sidearms (C) as shown, using Bolts (K and G), and Bushes (F), with washers orientated as shown and **bolt heads (G) on outside of chassis rail** (i.e. wheel side). Push Cross Tube (A) upwards (bend bumper tags out of the way) and orientated correctly, and **Tighten all bolts**.
- Refit rear wheels, raise spare wheel and attach splash panels. On normal Espace only, use Bolts (H) to space down exhaust.
- Attach Flanged Neck (ZF) to Cross Tube (A) using Bolts (V), (N.B Grade 10.9, Torque Setting 139Nm), with Electrical Plate Angle (ZEQ2) on left side.
- The Electrical Plate (ZEP1) can be positioned to the right or left of the towball (as shown). It can also be attached to the Electrical Plate Angle (ZEQ2) using Bolts (U).

Notes: This towbar must be used with either a Witter Towball (part number Z1) or Class A50-1 or A50-X towball dimensionally conforming to A50-1 with a 'D' and 'S' value greater than or equal to that of the towbar. Also for use with Witter Quantum Detachable Towball Unit (part number ZQ2030).

All bolts should be checked periodically for tightness, the interval depending on frequency and duration of towing.

Please refer to the vehicle specification for the trailer weight and nose limits, which **must be observed**.

Recommended torque settings: Grade 8.8 M10 - 53 Nm, M12 - 95 Nm, M14 - 150 Nm, M16 - 214 Nm
Grade 10.9 M12 - 139 Nm





Fitting Instructions

QUANTUM DETACHABLE TOWBALL SYSTEM (ZQ XXXX)

MATERIALS

A	1	Receptor/Socket for Towball
T	1	Detachable Towball
K	2	Keys for Detachable Towball
X	4	M12 x 25 x 1.75mm Bolts, Spring Washers and Flat Spacer Washers (25mm O.D)
FC	1	Fixed Weather Cover
RC	1	Removable Weather Cover
L	1	Centreline Label
B	1	Bag
ZQM1	1	Operation Manual

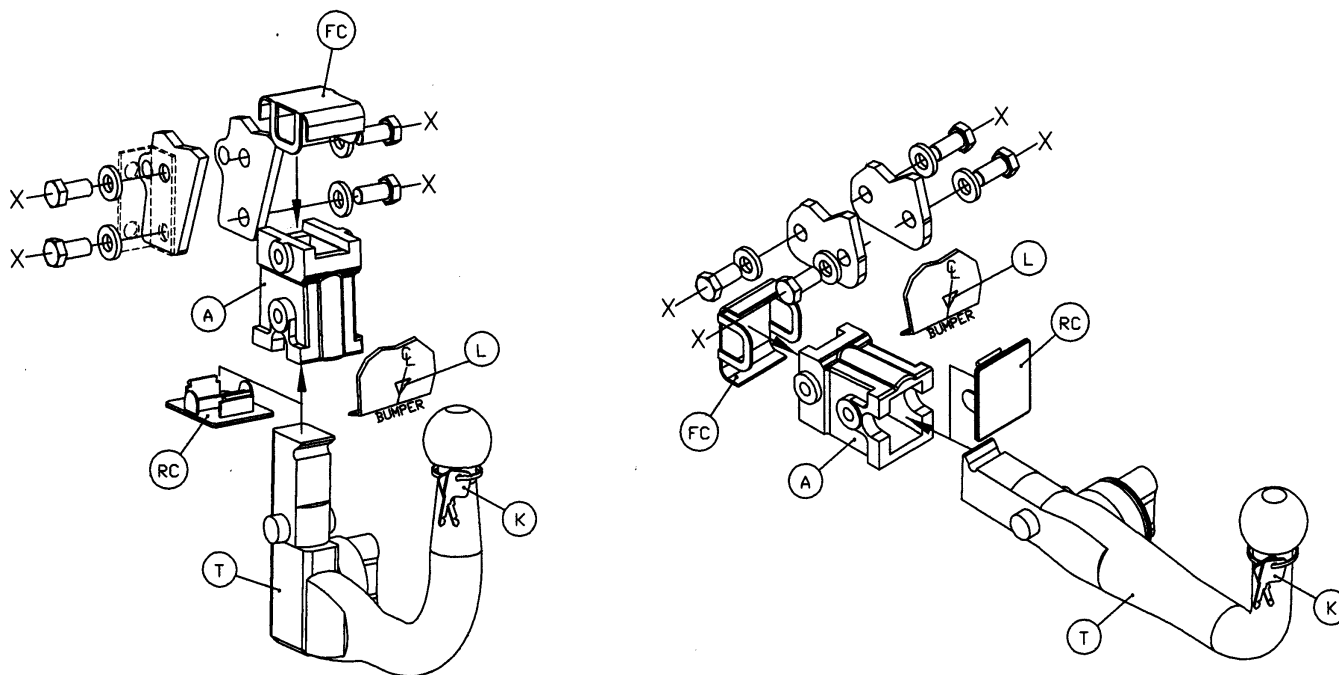
INSTALLATION PROCEDURE

1. Place black plastic fixed weather cap (FC) over forward/ (horizontal system) / upper (vertical system) holes of receptor/socket (A), insert receptor/socket (A) into gap between mounting plates on the towbar, and loosely attach using bolts (X).
 - Notes: (ZEQ1), which is provided as part of the towbar should be refitted on left hand side, together with the electrical socket mounting plate (ZEP1). Only use the 25mm O.D Flat Spacer Washers (X) where there are no loose components attached, i.e. ZEQ1 (electrical socket mounting plate bracket, shown in dashed linetype below).
2. Insert detachable towball unit (T), using procedure detailed in Operation Manual provided, and ensure correct vertical alignment of the towball before fully tightening bolts (X).
3. Attach centreline label (L) to lower edge of bumper.
4. Remove keys (K) from neck of towball, and record the key number in the Operation Manual, together with the fitters name, telephone number, date fitted, vehicle model and registration number and towbar part number.

Bumper Cut – It may be necessary to trim the bumper to allow adequate clearance around the operation handle on the right hand side.

Note: It is essential that the customer/end user is familiar with the operation of the towball system, as detailed in the operation manual, which must be handed to the customer/end user.

Recommended torque settings: M12 - 95 Nm



Important - It is essential to ensure that the Operation Manual is in the possession of the end user.

******IT IS ESSENTIAL THAT THESE INSTRUCTIONS ARE HANDED TO USER AFTER FITTING******