



Fitting Instructions

TOWBAR R31R

For Rover 75 Saloon (June99-)
75 Estate (July 01-)

MATERIALS

| | | |
|---|---|--|
| A | 1 | Towbar Main Frame |
| C | 1 | Centre Neck with European facing to 94/20/EC – A50-1 |
| D | 2 | Side Arms |
| F | 2 | Clamp Plates |
| G | 1 | Electrical Socket mounting plate |
| H | 2 | Bushes (40mm O.D. 31mm long) |
| J | 2 | Bushes (40mm O.D. 24mm long) |
| K | 8 | M8 x 30 x 1.25mm Bolts, Lock Washers and Flat Washers (25mm O.D.) |
| L | 2 | M12 x 35 x 1.75mm Bolts, Lock Washers and Flat Washers (30mm O.D) |
| M | 6 | M12 x 35 x 1.75mm Bolts, Lock Washers and Large Flat Washers (40mm O.D.) |
| N | 2 | M12 x 80 x 1.75mm Bolts and Nyloc Nuts |
| P | 2 | M12 x 100 x 1.75mm Bolts, Nuts and Lock Washers (for use with estate) |
| P | 2 | M12 x 60 x 1.75mm Bolts, Nuts and Lock Washers (for use with saloon) |

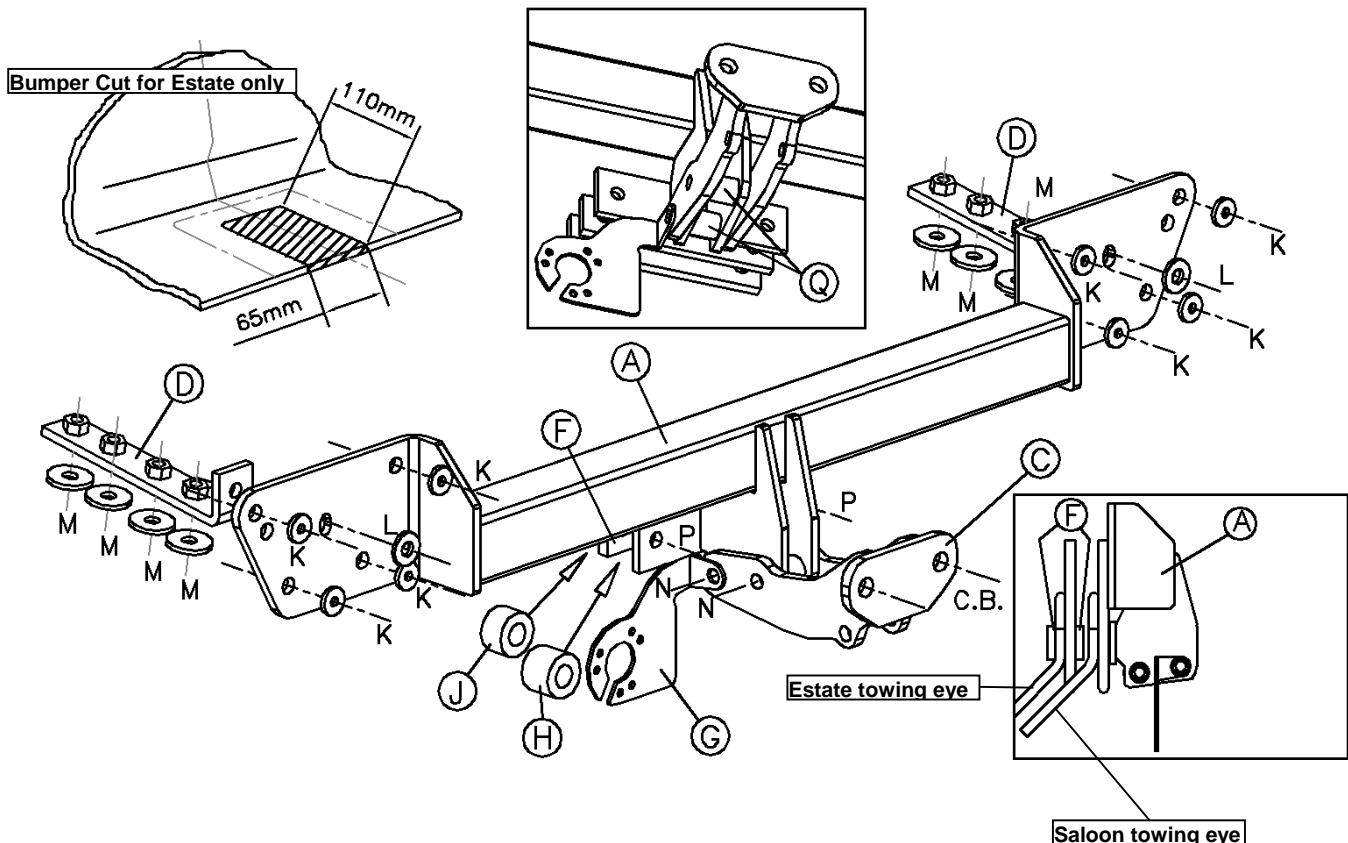
FITTING

1. Remove the bumper (**Saloon:** 5 plastic plugs on the top edge and 2 screws on the lower edge at the wheel arch) (**Estate:** 4 lower mud guard screws. 2 rear lower plastic plugs. 5 screws under upper plastic bumper trim. 2 upper screws along side light cluster). Remove bumper beam (4 bolts each side). Cut bumper as shown for the estate.
2. Insert Side Arm (D) into the open ends of the chassis and loosely attach using Bolts (M) (**Note:** 2 Fixings on **Saloon** each side and 3 on **Estate** each side). It may be necessary to temporarily lower the rear exhaust silencer to assist fitting.
3. Loosely attach Main Frame (A) to Side Arms (D) using Bolts (L) and to rear panel using Bolts (K).
4. Attach Main Frame (A) to vehicle towing eye using Bolts (P) sandwiching the towing eye with one Clamp Plate (F) and Bushes (J) for the **Saloon** or two Clamp Plates (F) and Bushes (J and H) for the **Estate**. Tighten all Bolts and refit the bumper.
5. Attach Centre Neck (C) and Electrical Plate (G) using Bolts (N).

Note: This towbar must be used with either a Witter Towball (part number Z1) or Class A50-1 or A50-X towball dimensionally conforming to A50-1 with a 'D' and 'S' value greater than or equal to that of the towbar, also for use with Witter Removable Towball Unit (part number ZR2H000)..

Please refer to the vehicle specification for the trailer weight and nose limits, which **must be observed**.

Recommended torque settings: M8 - 27Nm, M10 - 53 Nm, M12 - 95 Nm, M14 - 150 Nm, M16 - 214 Nm

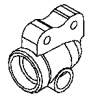


Fitting Instructions

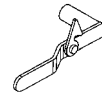
Detachable Towball System

ZR2

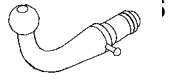
A Towball Receptor Unit



B Handle



C Towball Neck



P Safety Chain Plate
Nylocs



W Weather Cover

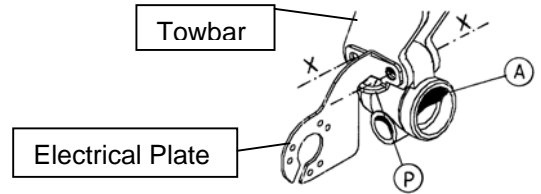


S Towball Neck Bag

2 M12 x 75mm x 1.75 Bolts +

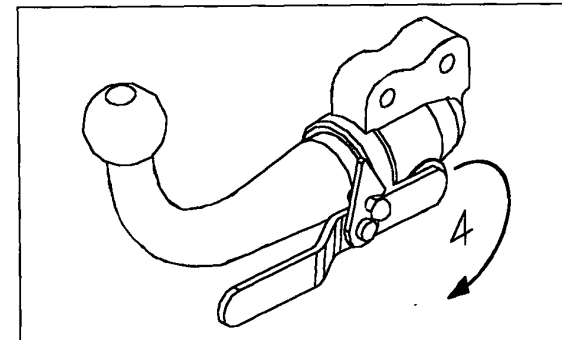
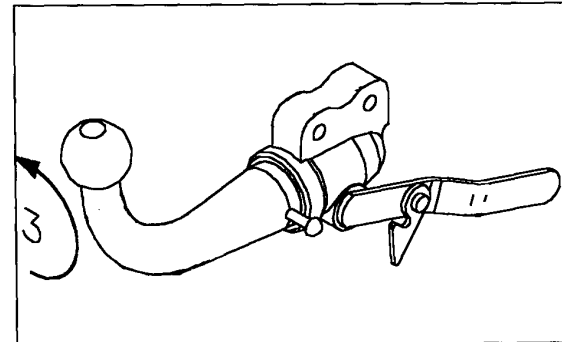
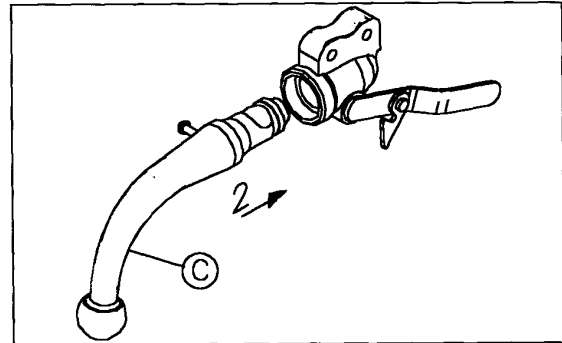
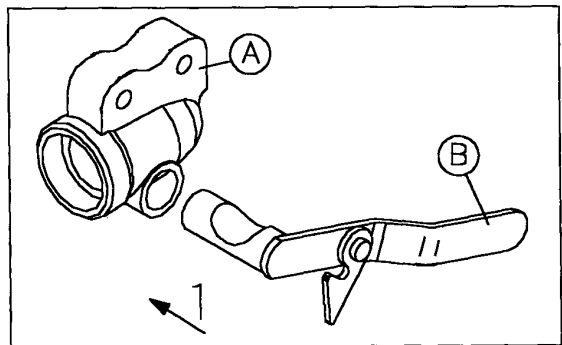
FITTING OF TOWBALL RECEPTOR

1. Remove original bolts at (X) and Towbar Centre Part (if fitted).
2. Attach Towball Receptor Unit (A), Safety Chain Plate (P) and original Electrical Plate if removed, to Towbar Centre Plates using replacement Bolts and Nyloc Nuts.
3. Tighten Bolts to 96 Nm.



DETACHABLE OPERATION

1. Slide Handle (B) into Towball Receptor Unit (A) and keep orientated as shown.
2. Slide Towball Neck (C) into Towball Receptor Unit (A).
3. Rotate Towball Neck (C) anti-clockwise 180°.
4. Rotate Handle (B) clockwise until Spring Loaded Lock clips into position as shown.



REMOVAL OF TOWBALL

Removal is a reverse of the above procedure. Place Handle (B) and Towball Neck (C) in bag provided. After removing Towball Neck (C) fit Weather Cover (W) to Towball Receptor Unit (A).

