



Fitting Instructions

TOWBAR MZ34
For MAZDA PREMACY
2000-

MATERIALS

A	1	Tubular Mainframe with 2 bolt faceplate with European facing 94/20/EC – A50-1
D	2	Sidearms
D1	4	M12 x 35 x1.75 Bolts, Lock Washers and Flat Washers (40mm O.D)
E	2	Bumper Straps
F	8	M12 x 35 x1.75 Bolts, 6 Nuts Lock Washers and Flat Washers (30mm O.D)
CB	2	M16 x 40mm Coupling Bolts, Nuts and Lock Washers

FITTING

1. Remove bumper (1 tip screw, 1 along forward lower edge, 1 beneath each light cluster, 1 nut each side behind side panels, 2 nuts each side from beneath. Cut out bumper mounting straps as shown below (both sides). Remove the two chassis end closing plates and discard.
2. Insert Sidearms (D) inside chassis rails and loosely locate using Bolts (D1) with flat washers. Attach Crossbar (A) to Sidearms (D) using Bolts (F). Using Mainframe (A) as a guide drill through rear panel for remaining Bolts (F), fit Strap (E) under bolt head of innermost Bolt (F).
3. Fully Tighten all bolts ensuring uppermost hole (X) of Bumper Strap (E) aligns with existing hole in rear panel.
4. Refit bumper.

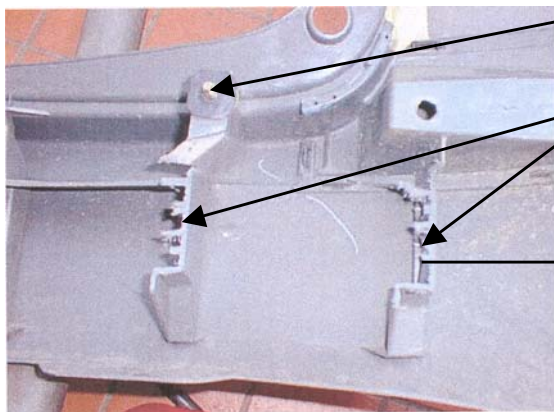
Note: This towbar must be used with either a Witter Towball (part number Z1) or Class A50-1 or A50-X towball dimensionally conforming to A50-1 with a 'D' and 'S' value greater than or equal to that of the towbar.

Please refer to the vehicle specification for the trailer weight and nose limits, which **must be observed**.

Recommended torque settings: M8 - 27Nm, M10 - 53 Nm, M12 - 95 Nm, M14 - 150 Nm, M16 - 214 Nm

VIEW SHOWING INSIDE OF BUMPER

NEAR SIDE SHOWN



LEAVE THIS MOUNTING

REMOVE BUMPER MOUNTS

40mm DEEP

