



Fitting Instructions

TOWBAR MR13

For MERCEDES SPRINTER VAN with
3000mm wheelbase without step or
3550/4025mm wheelbase with step
from 1995 -

MATERIALS

A	1	Towbar Mainframe with facing to ISO 3853 (BS AU114)
C	2	Cleats
D	2	Side Mounting Plates
E	2	6mm Packers
F	4	M10 x 40mm Bolts, Nuts, Lock Washers and Flat Washers (20mm O.D.)
G	4	M12 x 30mm Bolts, Nyloc Nuts and Flat Washers (20mm O.D.)
H	4	M10 x 25mm Bolts, Lock Washers and Flat Washers (20mm O.D.)
J	8	M12 x 90mm Bolts, Nyloc Nuts, Flat Washers (20mm O.D.) and Flat Washers (40mm O.D.)
CB	2	M16 x 50mm Coupling Bolts, Nuts and Lock Washers

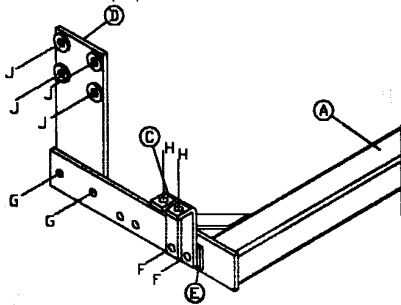
FITTING

- 208D: Remove towing eye (2 x M10 bolts in rear panel and 2 x M12 bolts through chassis) and discard.
308D and 312D: Remove bolts securing step bracket to the chassis and rear panel (2 x M12 bolts through chassis and 4 x M10 bolts in rear panel).
- Position the side mounting plates (D) on existing holes in chassis (4 each side) and loosely secure using bolts (J) ensuring the large washers are positioned between the plates and chassis.
- Position the mainframe (A) at holes (G) and loosely secure using bolts (G).
- Loosely attach the cleats (C) and Packers (E) to towbar mainframe (A) (see diagram for relevant position) using bolts (F) and to existing trapped nuts in transverse box section using bolts (H). (NOTE: On 308D and 312D models the step bracket is sandwiched between the cleat (C) and the vehicle). Finally tighten all bolts.

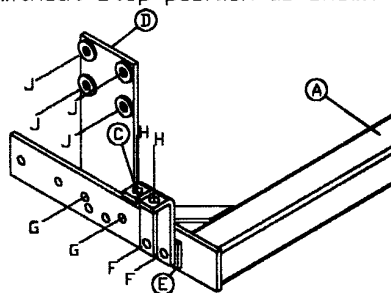
Please refer to the vehicle specification for the trailer weight and nose limits, which **must be observed**.

Recommended torque settings: M8 - 27Nm, M10 - 53 Nm, M12 - 95 Nm, M14 - 150 Nm, M16 - 214 Nm

3000mm wheelbase models
without step position as shown



3550/4025mm wheelbase
without step position as shown



3550/4025mm wheelbase
with step position as shown

