



# Fitting Instructions

TOWBAR HN47R  
For HONDA CIVIC HATCHBACK  
(2001-)

## MATERIALS

A	1	Tubular Mainframe
B	1	Centre Plate with European facing to 94/20/EC A50-1
C	1	Centre Plate with European facing to 94/20/EC A50-1
D	1	Inner Side Arm (left hand)
E	1	Inner Side Arm (right hand)
F	2	Outer Side Arms
G	2	Bushes (25mm O.D. x 16mm long)
H	10	M10 x 30mm x 1.5 Bolts, Nuts, Lock Washers and Large Flat Washers (40mm O.D)
J	2	M10 x 30mm x 1.5 Bolts, Nuts and Lock Washers
K	4	M8 x 35mm x 1.25 Bolts, Lock Washers and Flat Washers (25mm O.D.)
K	4	M8 Spigot Nuts, M10 Lock Washers and Flat Washers (M10 x 20mm O.D.)
L	4	M10 x 30mm x 1.5 Bolts, Nuts and Lock Washers
M	1	Electrical Plate
N	2	M10 x 45mm x 1.5 Bolts, Nuts, Lock Washers and Large Flat Washers (50mm O.D)
S	2	M12 x 65mm x 1.75 Bolts, Nyloc Nuts
T	1	Safety Chain Plate
CB	2	M16 x 50mm x 2.00 Coupling Bolts, Nuts, Lock Washers

## FITTING

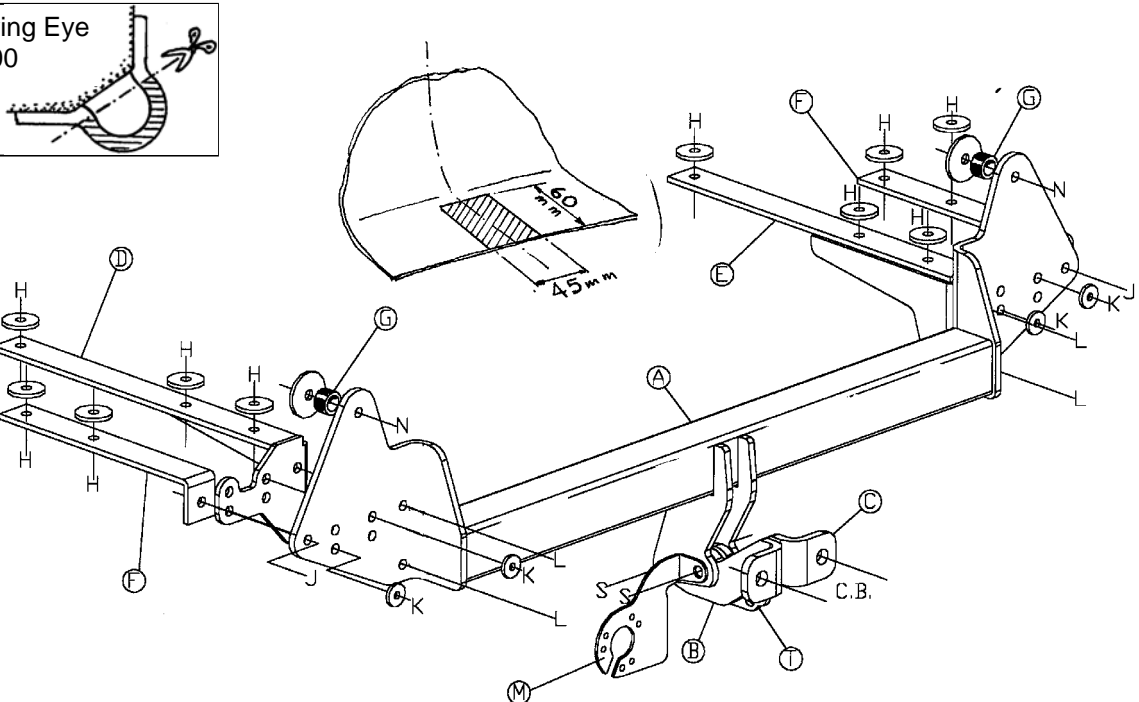
1. Remove the bumper (2 upper rear bolts behind plastic caps, 2 tip bolts, 2 wheel arch screws and 2 plastic plugs on lower edge). Remove the steel bumper beam. Cut bumper as shown. **Note: Clear all mastic compound from the washer and Side Arm seating areas as required.**  
**Note: On vehicles with captive studs at (K) Side Arms (D and E) have to be in place before attaching Mainframe (A).**
2. Remove the plastic plugs at (N). Insert Bushes (G) and loosely attach Mainframe (A) to vehicle using Bolts (N).
3. Loosely attach Side Arms (D, E and F) to Mainframe (A) using Bolts (K, L and J) or Spigot Nuts at (K) as required.
4. Mark up through Side Arms (D, E and F) for holes (H), drill down from inside the boot and attach using Bolts (H).  
Tighten all Bolts and refit the bumper.
5. Attach Centre Plates (B and C), Electrical Plate (M) and Safety Chain Plate (T) to Mainframe (A) using Bolts (S).

This towbar must be used with either a Witter Towball (part number Z1) or Class A50-1 or A50-X towball dimensionally conforming to A50-1 with a 'D' and 'S' value greater than or equal to that of the towbar, also for use with Witter Removable Towball Unit (part number ZR2M000). Towing eye must be removed to fit Removable Towball (See diagram).

Please refer to the vehicle specification for the trailer weight and nose limits, which **must be observed**.

**Recommended torque settings:** M8 - 27Nm, M10 - 53 Nm, M12 - 95 Nm, M14 - 150 Nm, M16 - 214 Nm

Remove Towing Eye  
to fit ZR2M000



# Fitting Instructions

## Detachable Towball System

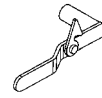
ZR2

### MATERIALS

**A** Towball Receptor Unit



**B** Handle



**C** Towball Neck



**P** Safety Chain Plate  
Nylocs



**W** Weather Cover

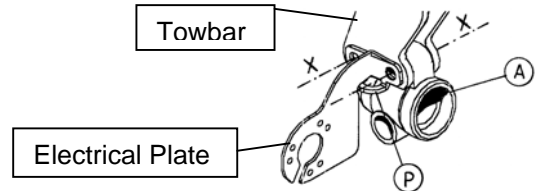


**S** Towball Neck Bag

**2** M12 x 75mm x 1.75 Bolts +

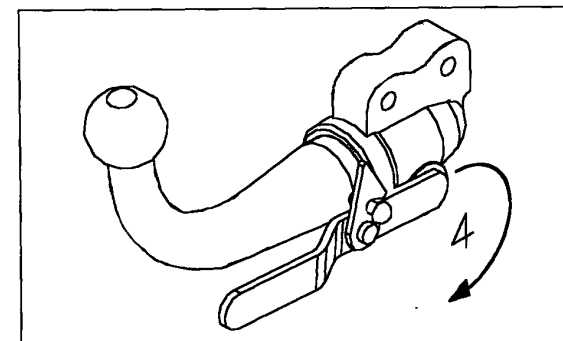
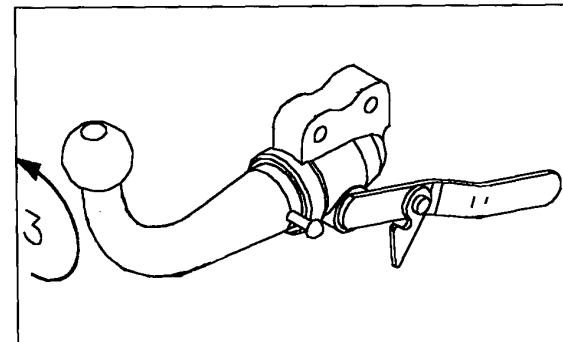
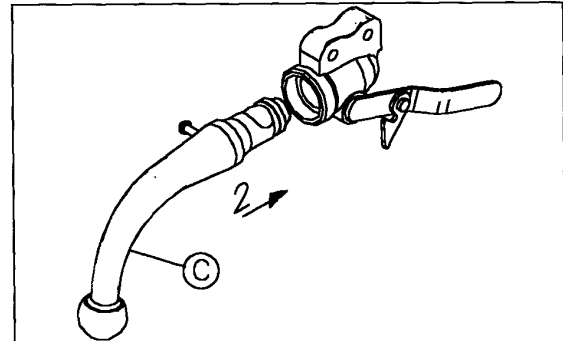
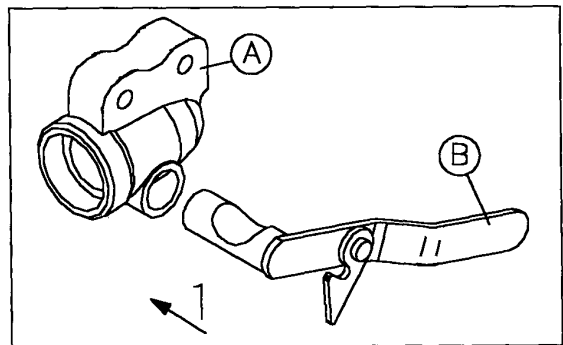
### FITTING OF TOWBALL RECEPTOR

1. Remove original bolts at (X) and Towbar Centre Part (if fitted).
2. Attach Towball Receptor Unit (A), Safety Chain Plate (P) and original Electrical Plate if removed, to Towbar Centre Plates using replacement Bolts and Nyloc Nuts.
3. Tighten Bolts to 96 Nm.



### DETACHABLE OPERATION

1. Slide Handle (B) into Towball Receptor Unit (A) and keep orientated as shown.
2. Slide Towball Neck (C) into Towball Receptor Unit (A).
3. Rotate Towball Neck (C) anti-clockwise 180°.
4. Rotate Handle (B) clockwise until Spring Loaded Lock clips into position as shown.



### REMOVAL OF TOWBALL

Removal is a reverse of the above procedure. Place Handle (B) and Towball Neck (C) in bag provided. After removing Towball Neck (C) fit Weather Cover (W) to Towball Receptor Unit (A).

